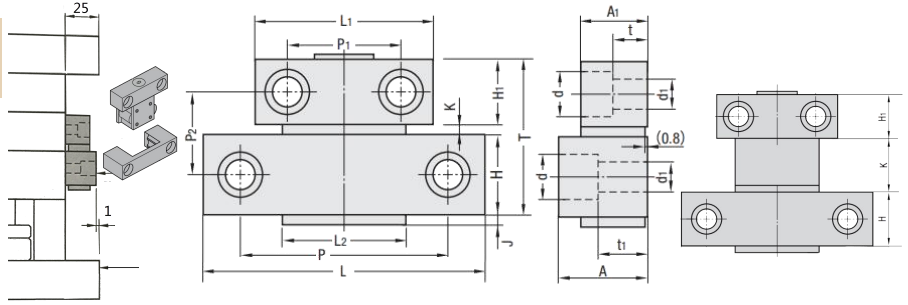


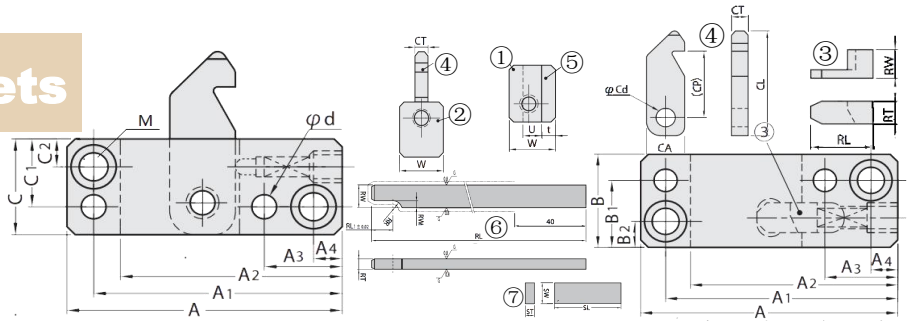
Roller Lock Sets



Withstands temperature up to 150°C

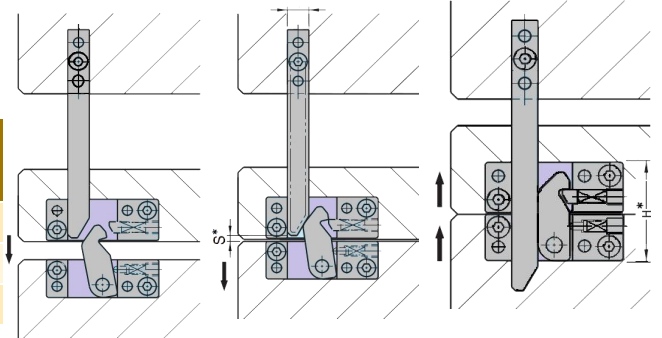
TYPE	Max.usable load (2sets under normal temp)	L	L1	L2	T	H	H1	J	K	P	P1	P2	A	A1	t	t1	d	d1
GMPLK-10	100kgf (981N)	48	36	25	42	22	18	2	2	36	24	22		16	9.5	18		6.5
GMPLK-20	200kgf (1960N)	54	42							40	28				9	16	11	
GMPLKS-30	300kgf (2942N)	65	46							50	31	26	24				7	
GMPLKS-60	600kgf (5884N)			35	48.5	25	20	3.5	3.5	52	33			19	9.5	15.5		9
GMPLKS-80S	800kgf (7845N)	73	50						11.5			34					14	9
GMPLK-100	1000kgf (9807N)				56.5	30	24	4	4	76	42	42	34	25	13	19	17	11
GMPLKS-80L	800kgf (7845N)	73	50	35	87.5	25	20	3.5	42.5	52	33	65	24	19	9.5	15.5	14	9

Parting Lock Sets



Components can be ordered separately

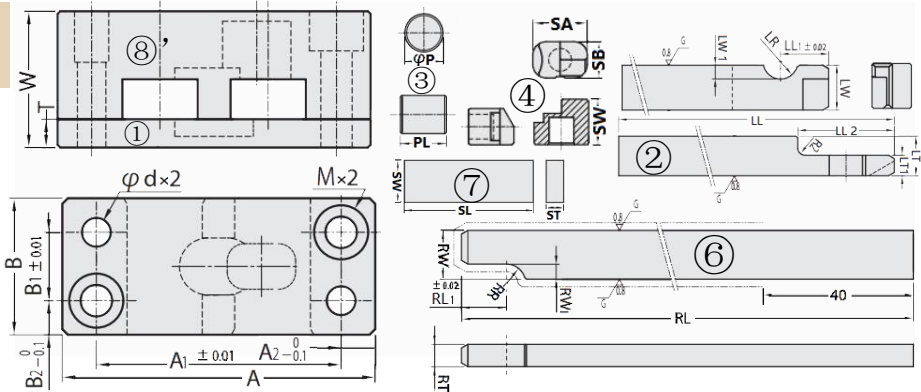
TYPE	③ Slide Lock	④ Cam Lock	⑥ Release Bar
GPLS	PLSS	PLSK	PLSL
GPLM	PLMS	PLMK	PLML
GPLL	PLLS	PLLK	PLLL



TYPE	① Slide Holder ② Cam Holder 50-55HRC													③ Slide Lock 58HRC				
	A	A1	A2	A3	A4	B	B1	B2	C	C1	C2	W	U	Bolt hole M	P	RL	RT	RW
GPLS	68	61.5	55	19	7	26	19	7	24	17	7	20	8	for M 6	Ø6	18	7	11
GPLM	88	79	70	24	9	38	29	9	30	21	9	30	12	for M 8	Ø8	20	9	16
GPLL	104	93	83	27	11	48	37	11	38	27	11	45	20	for M10	Ø10	24	12	26

TYPE	④ Cam Lock 58Rc					⑤ 58Rc	⑥ Release Bar 45Rc				⑦ Spacer 45Rc				
	CL	CP	CA	CT	Cd	t	W1	W2	T	L	SW	ST	SL	H*	S* approx.
GPLS	45	28	16	7.5	8	6	13	5.9	7	250	13	6.5	40	50	2
GPLM	64	41	20	10	10	7	16	8	10	300	16	8	50	68	11
GPLL	84	53.5	25	18	18	8	20	9.5	15.5	350	20	10.2	55	86	15

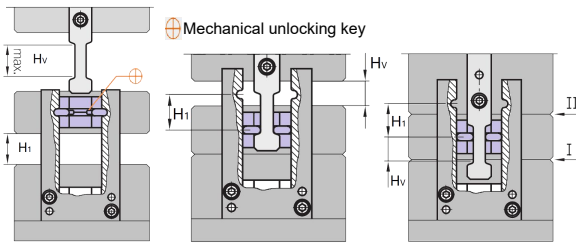
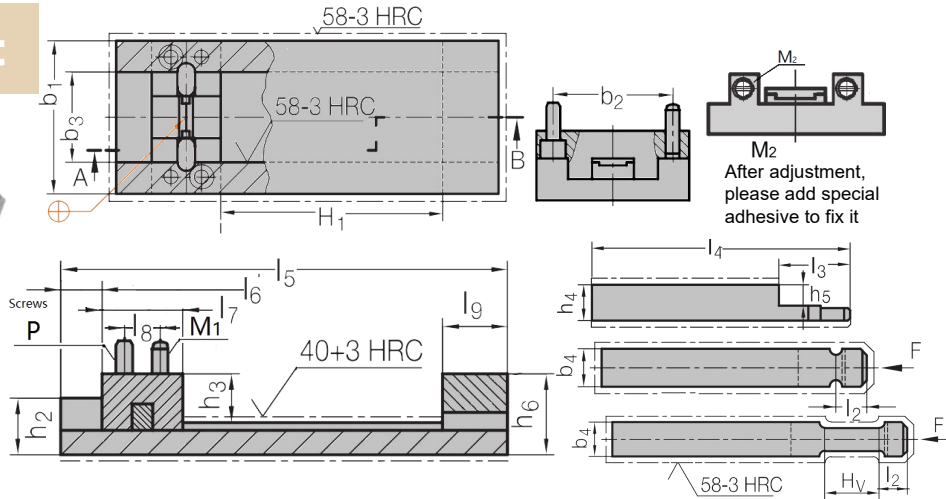
Latch Lock Unit



	① Cam Holder						③ Back Plate					② Lock Bar							
TYPE	A	A1	A2	B	B1	B2	d	M	W	T	LW	LW1	LR	LL	LL1	LL2	LT	LT1	
GPL150	55	43	6	24	12	6	5	5	24	5	13	4	5	100	14	11.5	7	6	
GPL200	67	53	7	32	16	8	6	6	32.5	6	18	5	6	150	18	16.5	9	10	

	③ Lock Pin		④ Slide Lock			⑥ Release Bar						⑦ Spacer		
TYPE	P	PL	SA	SB	SW	RW	RW1	RR	RL	RL1	RT	SW	SL	ST
GPL150	10	12	12	8	10	13	4	5	150	12	6	13	40	5.5
GPL200	12	17.8	16	10	13	16	5	6	200	16	16	16	50	6.6

Latch Lock Unit



TYPE	b1	HV	F[N]	P	M1
GZ174 / 50 / 20	50	20	16000	6x20	M 4x12
GZ174 / 80 / 32	80	32	27000	6x20	M 6X16
GZ174 / 100 / 50	100	50	48000	8x20	M 8X18

TYPE	h6	h5	h4	h3	h2	b4	b3	b2	l9	l8	l7	l6	l5	l4	l3	l2	H1	
																	min	max
GZ174/50/20	22.3	10	16	9.3	16	15	30.05	40	20	10	20	10	140	140	40	9.75	4	90
GZ174/80/32	30.3	13	21	12.3	22	20	45.05	60	34	16	34	15	200	200	66	16.75	5.5	117
GZ174/100/50	37.5	16	27	15.5	27	25	60.05	80	45	22	45	15	250	250	95	22.25	7	145